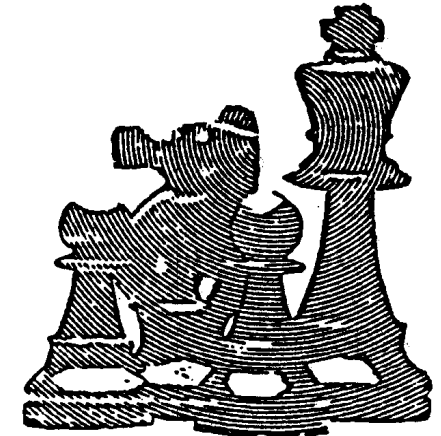


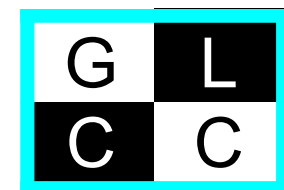
Greater London Chess Club Championships

*Bernfield, Foley and
Ashelford Tournaments*

*Tuesday evenings
November 2018 – June 2019*



*2017-18 Winners:
Bernfield – Tim Pelling
Foley – Levi Weston
Ashelford – Roger Clarkson*



Venue

Games will normally be played at St George's Bloomsbury on Tuesday evenings, start time 6.45pm. By mutual agreement, players may arrange to play at another venue or with a different start time. Players not arriving at the board within 45 minutes of the agreed start time should expect to be defaulted.

Time commitment

Before entering a tournament, please be sure that you will have sufficient time to complete all your games by June 2019.

If there is more than one group in a tournament, group stage games must be completed by **30 April 2019**.

Results should be notified promptly to the tournament controller, preferably by email to tournaments@glcc.org.uk. Tournament tables will be posted on the club's website.

Schedule for knockout finals (if required)

K/O final to consist of one game at standard rate of play, first named player has White.

In the event of draw game replayed as follows:

- Swap colours for one game at 60 minutes per player. If drawn then:
- Swap colours for one game at 15 minutes per player. If drawn, players share the title,

Withdrawals

If you need to withdraw from a tournament please notify the controller as soon as possible. The tournament controller will rule on the scoring status of a withdrawing player's games.

Group A
5-6 players

Group B
5-6 players

Group stage format if required
All-play-all
Nov – April

Finals
May / June

Bernfield, Foley and Ashelford Club Championship Tournaments

- ◆ Graded tournaments for all playing strengths (under 100, 100-150 and over 150ECF)
- ◆ Games submitted for ECF grading
- ◆ All-play all groups with knockout play-offs if required
- ◆ Flexible tournament schedule – fit your tournament games around league matches through the season

Entry fee – £6 all tournaments

Bernfield - winner will be declared the Club Champion and hold the Bernfield Trophy for one year. They will give the Club Champion's simultaneous display at the Autumn General Meeting.

Foley - winner to hold the Foley Cup for one year.

Ashelford - winner to hold the Ashelford Trophy for one year and earns the right to compete in the Foley the following year.

Engraved replica trophies awarded to all first time winners

Format

In each tournament, all-play-all groups of up to ten or twelve players. If any tournament receives more than ten or twelve entries then it may be split into two groups with knockout play-off of group winners. The controller may need to modify the grade banding of tournaments to ensure players are evenly matched. Groups within tournaments will be drawn by lot once entries have been received. If necessary, Sonneborn-Berger tiebreak score will decide group placings.

Rate of play

All moves in 75 minutes + 15 second increment per move (programme 18 on GLCC DGT2010 clocks). If suitable digital clocks are not available, then 30 moves in 75 minutes. After Black's 30th move both clocks are turned back 15 minutes and the game continues to a quickplay finish. If both players do not want a quickplay finish, group stage games may be played at a rate of 36 moves in 90 minutes with adjournment after 3 hours.

Arranging your games

You will be provided with contact details for players in your tournament and you should arrange games against opponents in your group for mutually convenient dates. The player of the White pieces has the responsibility of contacting his/her opponent and should offer up to four dates for the game to be played. One of these should be accepted by the player of the Black pieces.

Grading

Results will be submitted for ECF grading. Ungraded players should provide an estimate of playing strength. Players must be ECF members (minimum Bronze membership) to take part in these tournaments

Rules

The FIDE Laws of Chess apply. A copy of the current Laws (2018) has been placed in the club equipment cupboard for reference. In the event of a dispute the tournament controller will arbitrate.

ENTRY FORM

Name _____

Address _____

Phone _____

Email _____

ECF Membership No. _____

Grade _____ *(ungraded players please provide estimated grade)*

Preferred tournament (please tick one):

Bernfield *(open to all but typically 150ECF+)*

Foley *(approx 100-150 ECF)*

Ashelford *(approx 100 ECF and below)*

I enclose £6 entry fee in cash / cheque (payable to 'Greater London Chess Club'). Please do not send cash in the post.

To enter by email send the above information to tournaments@glcc.org.uk and pay the £6 fee either by bank transfer to the GLCC account or using the Paypal button on the 'Club Competitions' page on the GLCC website.

Entries should be sent to or handed in to the Tournament Controller by **31 October 2018**.

Late entries from new members, may be accepted, space permitting, until early 2019.

Tournament Controller: Nigel Blades, 178 Lionel Road, Brentford TW8 9QT, tel 020 8580 5872. Email tournaments@glcc.org.uk.

All entries will be acknowledged by email if an email address is given.